

The image features a close-up, high-resolution photograph of a wood grain, likely oak, showing distinct, wavy growth rings. The wood is a warm, golden-brown color. A dark blue, semi-transparent rectangular overlay is positioned on the right side of the image, partially covering the wood grain. The text "SCW Woodshop Education Center" is written in a white, serif font, centered within the dark blue area. A white L-shaped graphic element is located on the left side of the dark blue area, consisting of a vertical line at the top and a horizontal line at the bottom, meeting at a corner.

SCW Woodshop Education Center

By Myrna Barnard

What lurks inside this newly renovated Education Center?

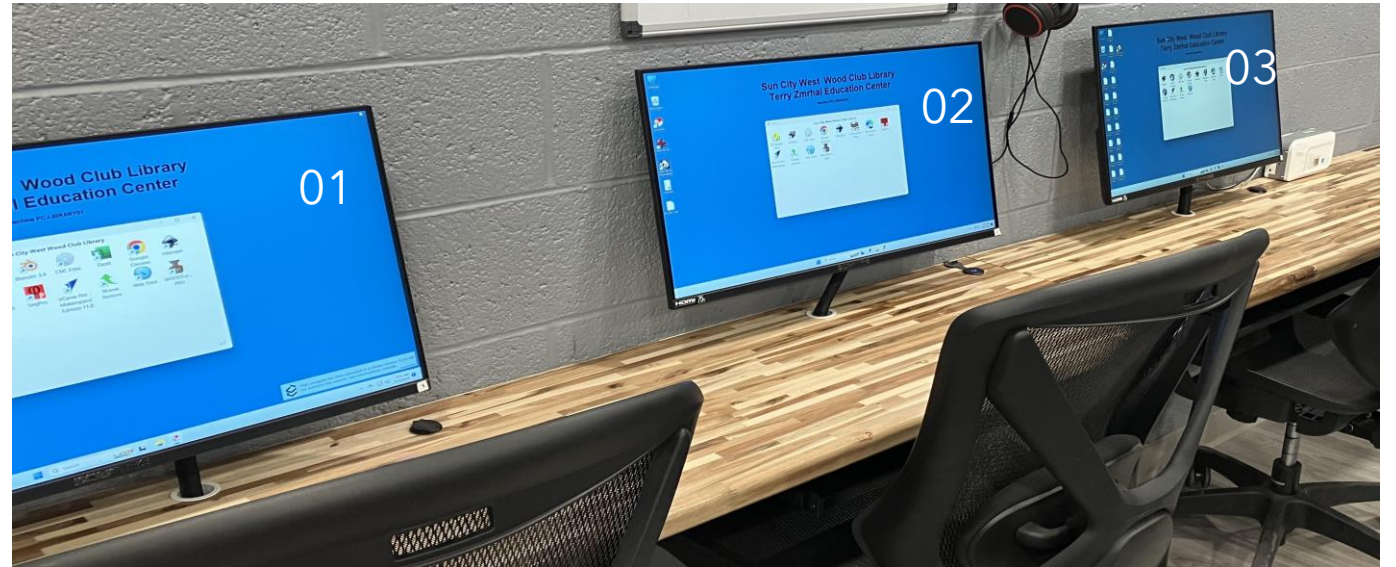
April 2023

WOODSHOP EDUCATION CENTER



8 Computers

Numbered 01 through 07
With lots of memory
Number 08 in CNC room



Displays, Keyboards & Mouse

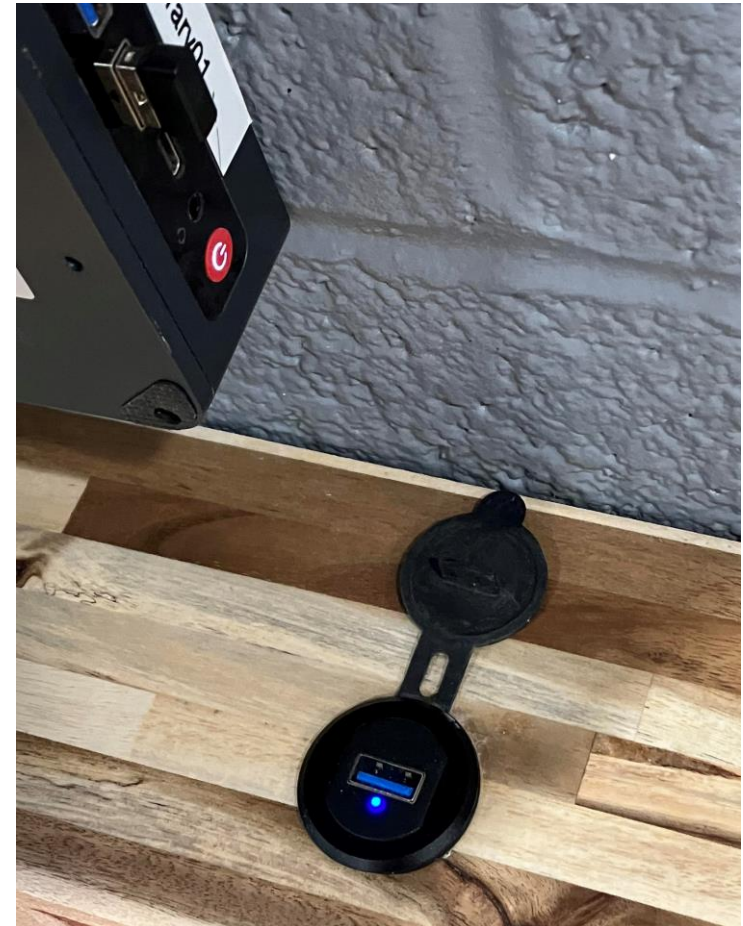
Each computer has a dedicated 27" Screen with Keyboard & Mouse on slideout drawer



USB Ports

USB Ports available at every workstation located to the right of the screen on the counter.

Dust cover is provided to minimize the dust accumulation.

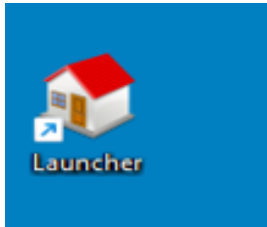




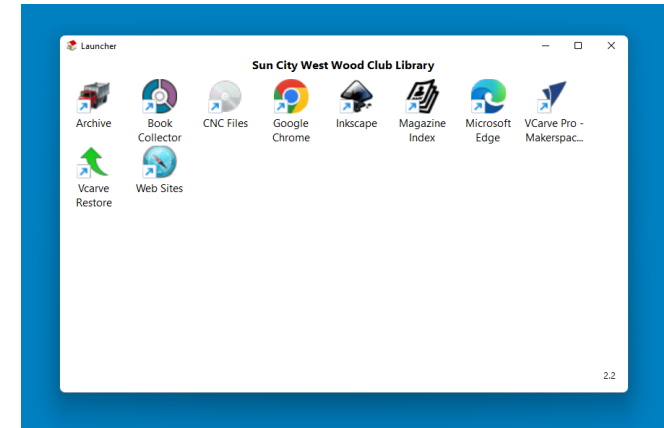
WAKE UP !!!

**IF THE SCREEN IS DARK MERELY PRESS A KEY OR CLICK THE
MOUSE TO WAKE UP THE COMPUTER FROM A NAP**

Launcher



Press Launcher icon
To open the
Launcher Window



NOT ALL COMPUTERS ARE EQUAL

**THE LAUNCHER WINDOW DISPLAYS WHAT APPLICATIONS ARE
AVAILABLE ON THAT COMPUTER**

Listing of applications showing which software is on which computers is located on the shelving.

Software

SOFTWARE CATEGORIES:

- **Microsoft Office:** Word, Excel, Powerpoint, NAPS (scanner)
- **Image Design & Editing:** Inkscape, Blender, 3D Design
- **Woodturning:** 3D Pro, Wood Turner Pro, Lamination Pro, Segment Pro
- **CNC File Creation:** Vcarve
- **Laser File Creation:** Xtools Creative Space

Using the Internet

TWO WEB BROWSERS - CHROME & EDGE

Clicking on either browser will open to the woodshop website

These browsers operate in "GUEST" mode. Which means for security purposes your passwords will not be saved.

Where Does the Junk Go?



ARCHIVING

Personal data left on computers will be archived for 30 days and then destroyed.

Moral of the Story - Take your data with you when you leave the computer.

And Then There's WiFi



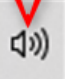
Strong WiFi Signal Throughout the Shop

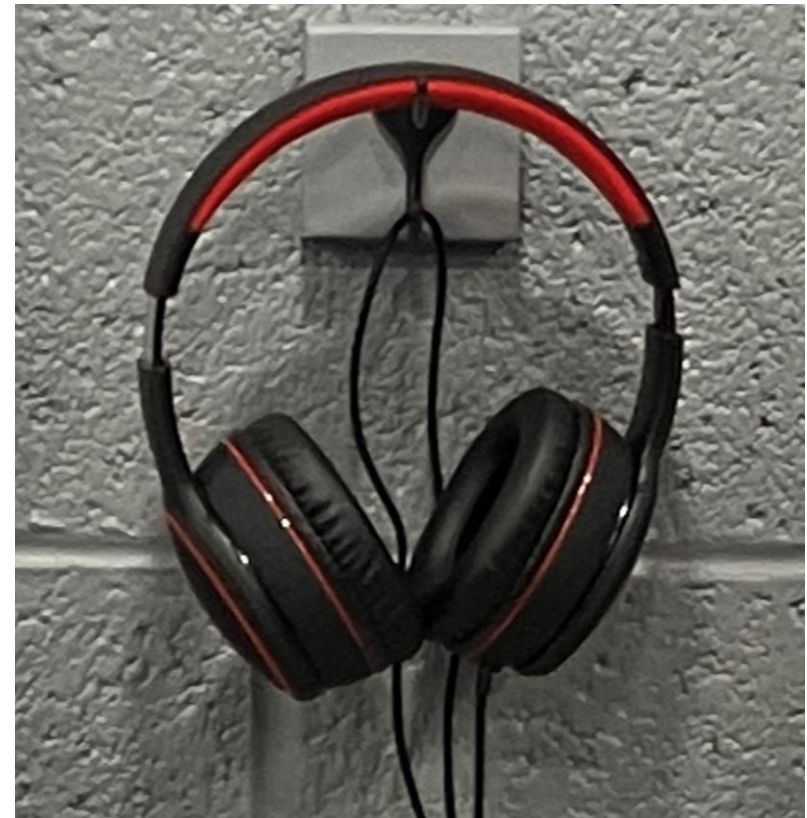
One WiFi Unit in CNC Room & One in Library

WiFi Password: wclibrary

Want to Watch Videos?

There are two headphones available for members to watch and listen to online training videos.

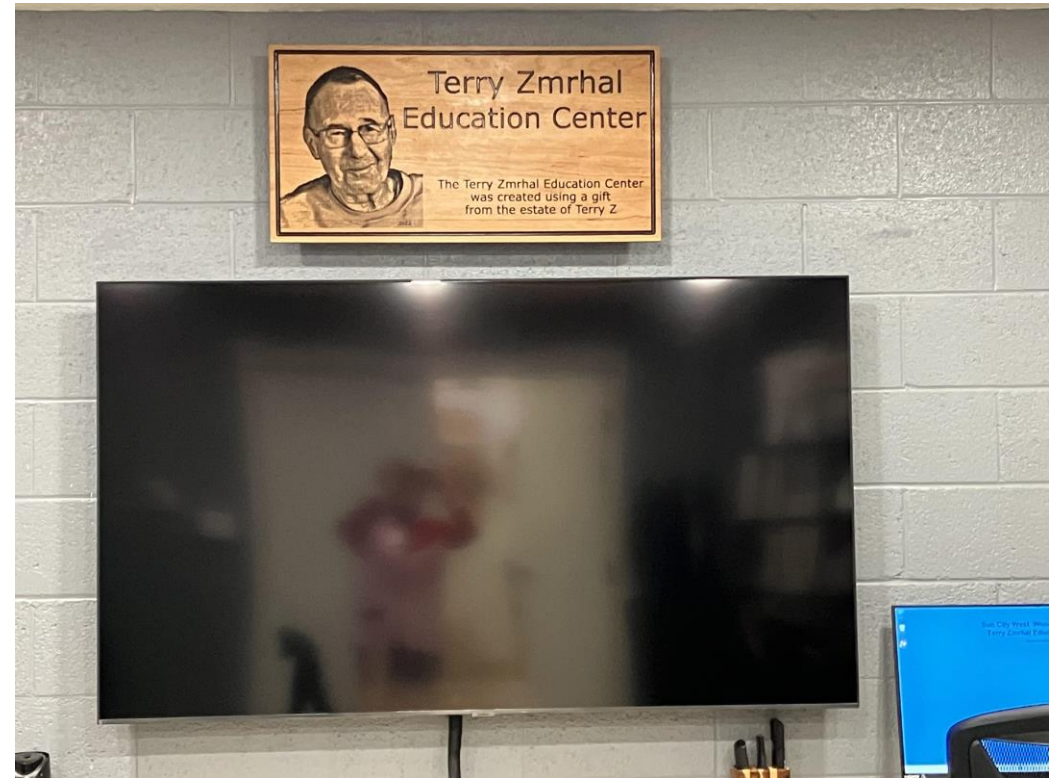
The volume is controlled on the computer. The icon  is in the lower right corner on the computer screen.



Big Screen TV

Computer #04 To the Right of the Big Screen can project its Screen Image onto the TV

Useful for Class Instructors using Visual aids.



New Printer/Scanner/Copier



The Printer is accessible from every computer.

The box on the right is for contributions for copies - 5 cents a copy, please.

Scanner App (NASPZ) on PC03

Vectorized Images

Approx. 16,000 Vectorized Images have been uploaded and available to the membership. These images are available in four formats: AI, EPS, PNG, SVG.

A visual of these images can be found in the yellow, blue and green books on bookshelf. The digital images can be found within the CNC folder on the computer by referencing first the page number and then the image number.

These images are particularly useful to CNC and Laser folks since the images are vectorized they could go straight to toolpaths.

Traditional Library

Mike Ward, our Librarian, has done a great job to condense the books and magazines and preserved the ones most useful to members.

His goals for future improvements:

- Magazine digital subscriptions
- Improve book database for easier searching.
- Clean up scroll saw patterns with an Index.



Reminder to members: There is a binder available to check out magazines. Magazine Index can be found on some computers for research purposes.

The background of the slide is a close-up photograph of numerous wood slices of various sizes and thicknesses, arranged in a somewhat circular pattern. The wood has a warm, reddish-brown hue and a visible grain. A dark, semi-transparent rectangular box is overlaid on the left side of the image, containing the title text.

What's New or Upcoming?

- New Desktop Folder in the Launcher containing useful links to websites.
- A compilation of instructional videos stored on flash drives for members to checkout.
- Laser engraver to make logos for members to sign their artwork. To be installed in early 2024.
- Additional software as needed for the membership.
- Looking for member's wood artistry to display on the shelves in the library room. Photos are now being displayed of member's work. These photos are changed out about every six months. New projects are submitted to library committee for review and then photographed for display.



Thank you

THANK YOU FOR YOUR ATTENTION. IT IS MY HOPE EVERYONE LEARNED A LITTLE SOMETHING ABOUT WHAT EDUCATIONAL TOOLS ARE AVAILABLE TO THE MEMBERSHIP. JUST ANOTHER THING THAT MAKES THIS CLUB GREAT.